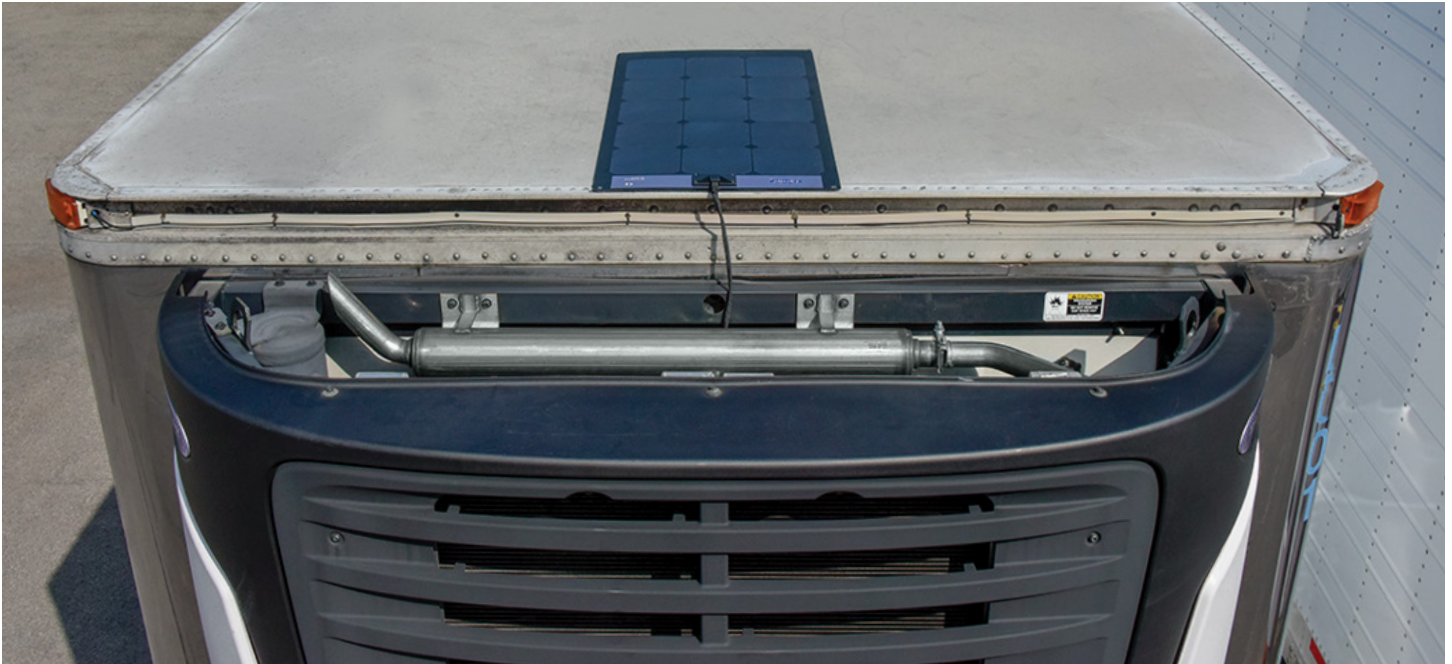




TRANSICOLD



Solar Charging System 50 Watt/4.2 Amp

**Durable 50W Panel Generates
More Power. Faster.**

**System combines ultra-pure silicon cells with a
high-performance charge controller for optimal
power delivery:**

- Faster, more complete charging of the refrigeration unit or heater battery helps ensure uninterrupted performance*
- Solar panel and charge controller perfectly mated for 12% greater power delivery*
- Three smartly-engineered panel layers – weatherproof light-trapping surface, uncut crystalline silicon (c-Si) wafer and copper heat-sink foundation – maximize strength and efficiency
- 100% tested for power generation prior to shipping
- 5-year Limited Warranty on panel output
- Installed and backed by comprehensive dealer service and support network in North America

* vs. prior technology Carrier® panel and controller



For more
information,
see other side.

*An Assist from
93 Million Miles Away.*



Solar Charging System

FEATURES & BENEFITS

Carrier's custom engineered solution meets the rigors of harsh transportation environments

Smartly-engineered Solar Panel:

- Full-size, uncut monocrystalline solar cells – maximize output and reduce power loss from intermittent shading
- ETFE top encapsulation plus specialty encapsulation stack – benefits vs. PET coatings
 - Increased light transmission due to low reflectivity
 - Higher UV resistance
 - Higher impact resistance
 - Increased dirt and scratch resistance
- Built-in copper heat sink layer keeps panel temperature cooler for greater power efficiency

Fixed Power Point Boost Charge Controller:

- Uniquely matches the fixed output of dedicated panel to the fixed voltage required by the battery
- Delivers higher efficiency of amps per panel*

Additional Benefits:

- Fuel savings possible when the Carrier reefer is operating in Start-Stop Mode
- Lightweight and weatherproof
- AGM and wet-cell compatible
- Adhesive-mounted; optional mechanical fasteners available to secure to trailer roof rivet strip
- Carrier spec wiring with plug and play connectors

PERFORMANCE SPECIFICATIONS

Wattage

50

Solar Operating Current

4.2 Amps

Dimensions:

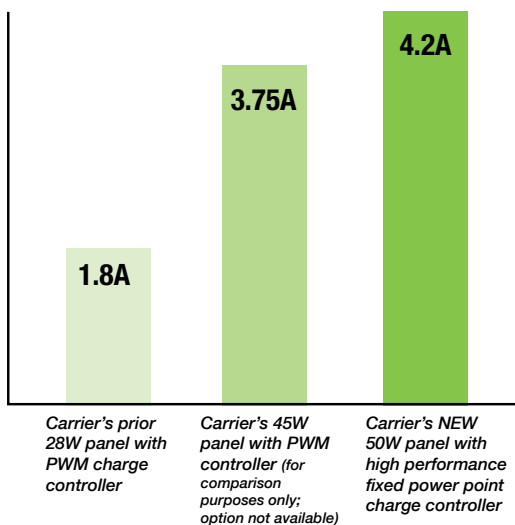
29.6"L x 16.9"W

Height:

0.08" (0.58" at junction box)

Contact your local dealer for kit part numbers.

Solar Operating Current Comparison



More amps than comparable systems, vital for keeping batteries topped off.



Advantageous for use with telematics-equipped reefers, including those using Carrier® Transicold® Lynx Fleet™ system



Tested Tough

Passed the following:

- Vibration – BS EN 60068-2-64:1993
- Salt Fog – ASTM-B-117-73
- UV Exposure – ASTM D 5017
- Thermal Shock – IEC 61646
- Damp Heat – IEC 61646
- Shock – meets Carrier's standard
- Hail Tested – <2% power drop in up to ¼" simulated hail
- RoHS Compliant
- CE Certified
- IP 67 rated

www.carrier.com/tru-solar

Panels may be eligible for U.S. Federal tax credit.