



Carrier Transcold Division  
Carrier Corporation  
P. O. Box 4805  
Syracuse, New York 13221

THIS DOCUMENT AND THE INFORMATION CONTAINED THEREIN IS PROPRIETARY TO CARRIER CORPORATION AND SHALL NOT BE USED OR DISCLOSED TO OTHERS, IN WHOLE OR IN PART, WITHOUT THE WRITTEN AUTHORIZATION OF CARRIER CORPORATION.

SUBMISSION OF THESE DRAWINGS OR DOCUMENTS DOES NOT CONSTITUTE PART PERFORMANCE OR ACCEPTANCE OF CONTRACT

CTD FUEL TANK INSTALLATION KIT PART NUMBER W/ ELECTRIC FUEL PUMP & DATA LINK SENSOR	U.S. ECCN	U.S. GAL. (NOMINAL)	A (INCHES)	B (INCHES)	C (INCHES)	D (INCHES)	DRAIN LOCATION	FILL TYPE	DRY WEIGHT INSTALLED (LBS.)	TANK MATERIAL
98-02750-00	EAR99	50	30.56	35.62	37.12	22.50	BOTTOM	SINGLE	72	ALUMINUM
		30		22.69	24.19	12.50			67	

CONVERSION CHART

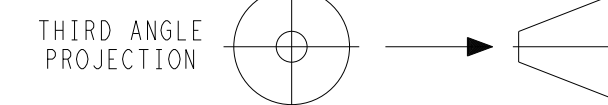
DECIMAL INCHES	FRACTIONAL INCHES
0.38	3/8
0.41	13/32
0.44	7/16
0.53	17/32
0.63	5/8
1.25	1-1/4
1.50	1-1/2
1.56	1-9/16
1.62	1-5/8
1.75	1-3/4
1.84	1-27/32
1.88	1-7/8
2.25	2-1/4
3.06	3-1/16
3.62	3-5/8
3.69	3-11/16
3.75	3-3/4
3.88	3-7/8
22.69	22-11/16
24.19	24-3/16
27.44	27-7/16
27.62	27-5/8
27.91	27-29/32
30.56	30-9/16
35.62	35-5/8
37.12	37-1/8
51.75	51-3/4
53.25	53-1/4
67.88	67-7/8
69.38	69-3/8
70.88	70-7/8
80.81	80-13/16
82.31	82-5/16
83.81	83-13/16

NOTES:

- CARRIER TRANSCOLD PROVIDES CIRCLED ITEM NUMBERS AS PART OF THE INSTALLATION KIT FURNISHED WITH EACH FUEL TANK ASSY.
- CONSULT CARRIER TRANSCOLD SERVICE ENGINEERING FOR PROPER INSTALLATION OF OPTIONAL FEATURES NOT DETERMINED AS CARRIER SUPPLIED.
- DIMENSIONS SHOWN ARE IN INCHES WITH EQUIVALENT MILLIMETERS IN CLOSED BRACKETS ( ).
- THE TRAILER STRUCTURE MUST BE EVALUATED BY THE TRAILER MANUFACTURER TO DETERMINE ITS ABILITY TO WITHSTAND THE IMPOSED LOADS OVER ITS SERVICE LIFE. THESE GUIDELINES DO NOT CONVEY ENDORSEMENT OR WARRANTY BY CARRIER TRANSCOLD FOR THE STRUCTURAL INTEGRITY OF THE TRAILER. FUEL TANKS INSTALLED IN ACCORDANCE WITH THESE GUIDELINES WILL PROVIDE ADEQUATE SUPPORT IN NORMAL SERVICE ENVIRONMENTS INCLUDING INTERMODAL APPLICATIONS.
  - FUEL TANK SUPPORT STRAPS MUST ATTACH TO THREE STEEL CROSS MEMBERS FOR 30 TO 50 GALLON TANK CAPACITIES.
  - FUEL TANK SUPPORT STRAPS WILL INTERFACE WITH THREE CROSS MEMBERS IF THEY ARE ON 12-INCH CENTERS. CROSS MEMBERS ON 15-INCH CENTERS WILL REQUIRE A STRUCTURAL STEEL CHANNEL TO SPAN THEM. THIS CHANNEL IS NOT SUPPLIED BY CARRIER TRANSCOLD.
  - INSTALL MYLAR SPACERS (ITEM 34) BETWEEN FUEL TANK HANGER BRACKETS (ITEM 50) AND BACKING PLATES (ITEM 51) AND TRAILER I-BEAMS.
  - INSTALL MYLAR WASHERS ON BOLTS (ITEM 20) AND NUTS (ITEM 12) WHERE THEY CONTACT FUEL TANK HANGER BRACKETS AND BACKING PLATES.
- RECOMMENDED TORQUE VALUES FOR FURNISHED LOCK NUTS ARE AS FOLLOWS:
 

BOLT/THREAD	TORQUE (FT-LB)
1/4-20	9
3/8-24	30
1/2-13	60-EXCEPT AS NOTED
- EACH INSTALLATION KIT CONTAINS SUFFICIENT CLAMPS AND GROMMETS FOR FUEL LINE ROUTING AND SECUREMENT. THE INSTALLER MAY ROUTE FUEL LINES THRU CONDUIT, 3/4 INCH (75) MINIMUM, AS AN ALTERNATE TO USING GROMMETS. (CONDUIT NOT FURNISHED AS PART OF INSTALLATION KIT)
  - FUEL PUMP CABLE SHOULD BE ROUTED SEPARATE FROM FUEL LINES WHERE POSSIBLE.
  - EACH INSTALLATION KIT CONTAINS SUFFICIENT CLAMPS AND HARDWARE FOR SECURING THE FUEL PUMP CABLE. ROUTING OF THE CABLE MAY BE ACCOMPLISHED BY EITHER OF THE FOLLOWING METHODS:
    - THRU FREE SPACE IN SUCH A MANNER AS TO PREVENT PHYSICAL DAMAGE. (NOTE: ADDITIONAL CLAMPS MAY BE REQUIRED WITH THIS METHOD OF ROUTING.)
    - THRU CONDUIT (NOT FURNISHED AS PART OF INSTALLATION KIT).
    - FUEL LINES SHOULD BE SEPARATED FROM EACH OTHER WHERE POSSIBLE.
- USE PIPE SEALANT ON ALL PIPE CONNECTIONS (NOT FURNISHED AS PART OF INSTALLATION KIT).
- INSTALL CONNECTOR (ITEM 26 ) IN FUEL TANK USING PIPE SEALANT ON PIPE THREADS. WHEN INSTALLING FLEXIBLE TUBE INTO THE TANK PASS THE TUBES, BOTH SUPPLY & RETURN, THROUGH THE FITTING AND PUSH TUBES TO THE BOTTOM OF THE TANK. WHEN THE TUBES REACH THE BOTTOM OF THE TANK, PULL THEM BACK UP APPROXIMATELY 1.00 INCH. THEN TIGHTEN THE COMPRESSION NUT.

C	UPDATED SHEET INDEX, SEE SHT 3,4,5	30 MAR 2023	NS	TM		ECN1166880
B	SEE NOTES 6.1, 7. & 7.1	23 MAR 2023	NS	TM		ECN1166562
A	INITIAL RELEASE.	22 NOV 2022	LT-NS	TM		ECN1161724
SYM	REVISION RECORD	DATE	BY	ENGR.	M.E.	NPCA NO.



IMPERIAL INCH FORMAT:  
UNLESS OTHERWISE SPECIFIED  
DIMENSIONS ARE IN INCHES WITH  
METRIC CONVERSIONS IN (MILLIMETERS)

TITLE

INSTALLATION INSTRUCTION  
22" DIA FUEL TANKS, 30 & 50 GALLONS

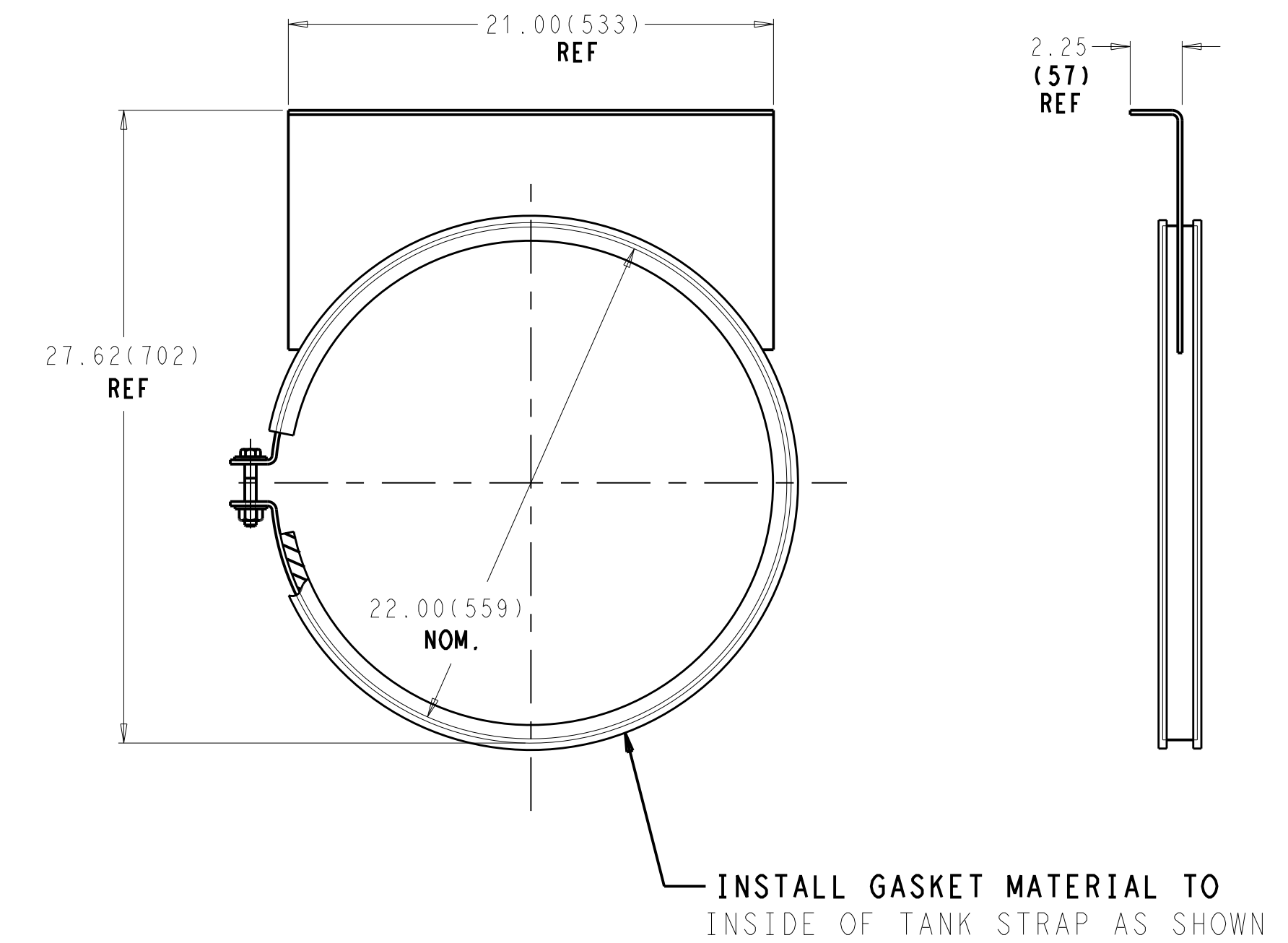
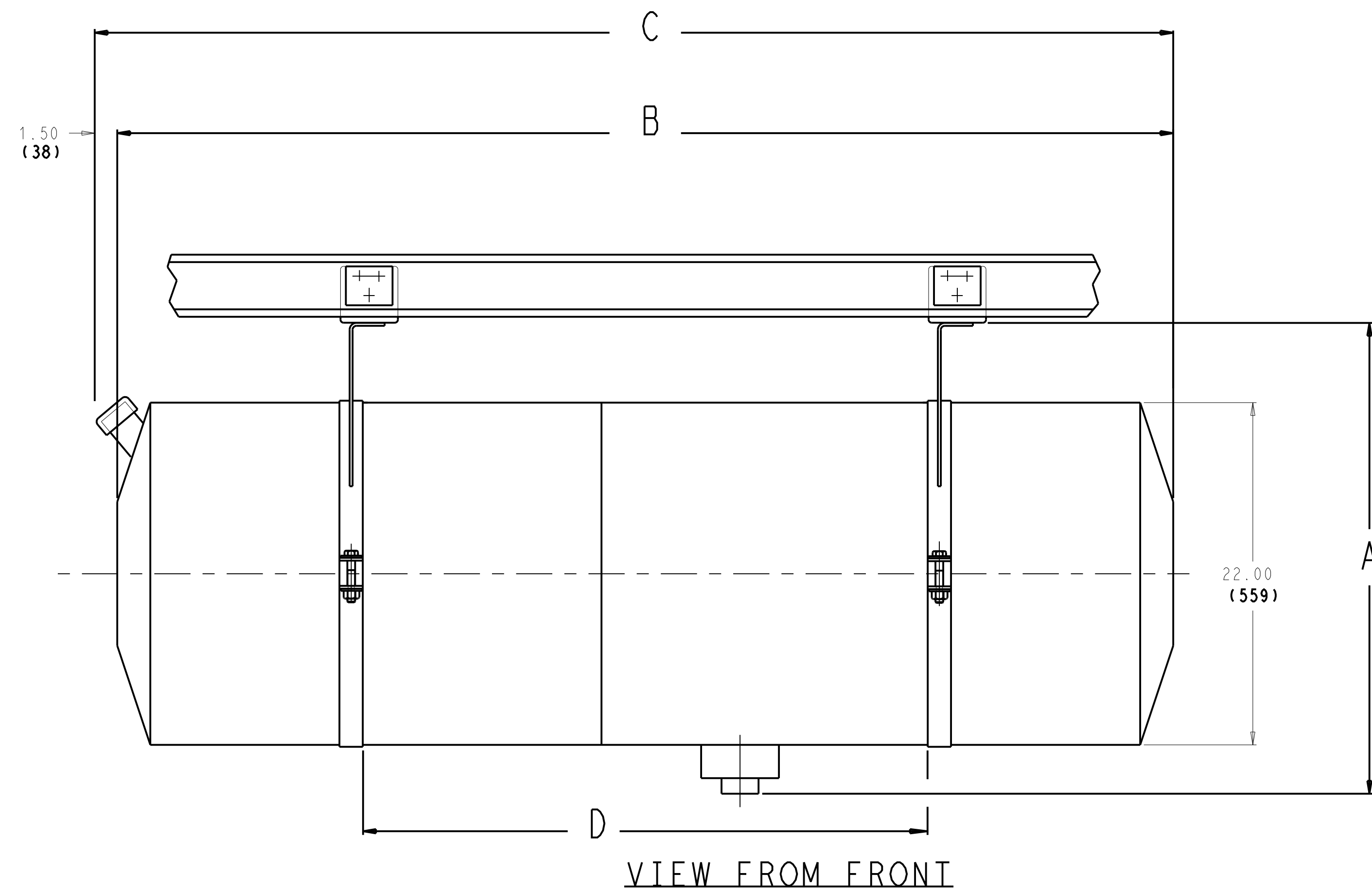
DRAWING NO.

98-02750  
SHEET 1 OF

DRAWING CLASSIFICATION: US EAR99

SUPERSEDES:

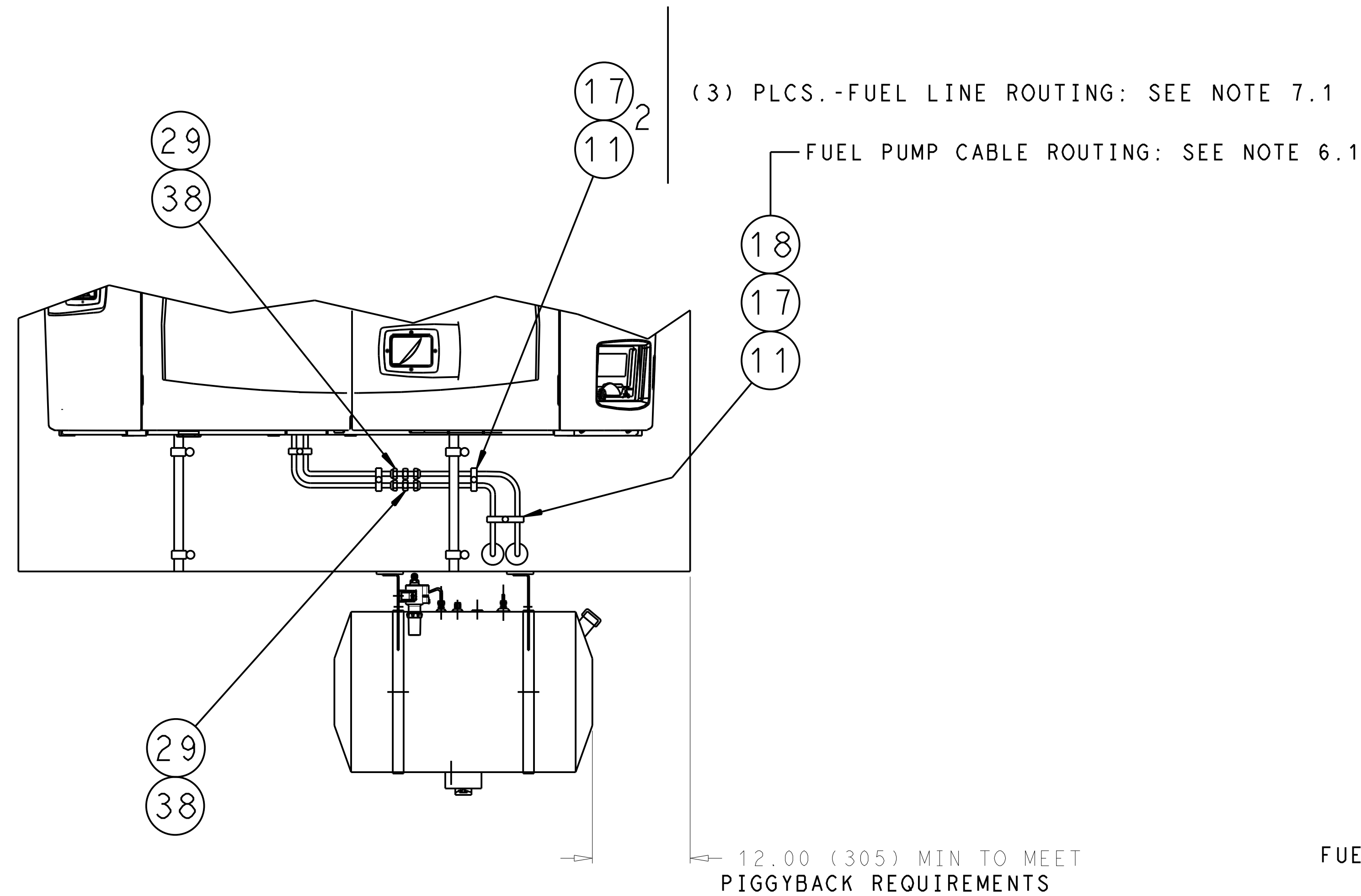
PART CLASSIFICATION: US



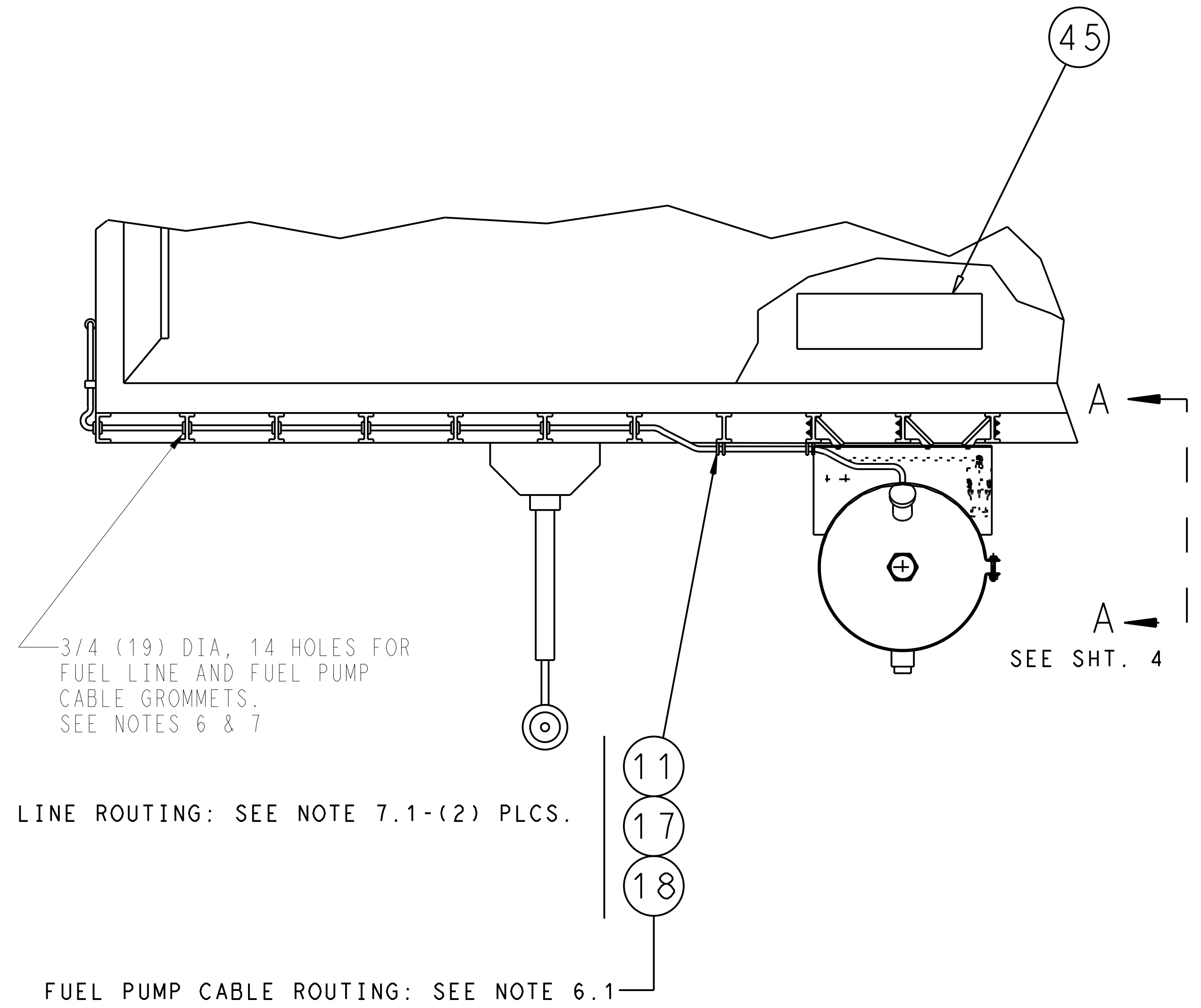
### TANK STRAP & GASKET DETAIL

NOTE: ADD GASKET SUPPLIED W/STRAP PACKAGE PRIOR TO MOUNTING STRAP TO TANK

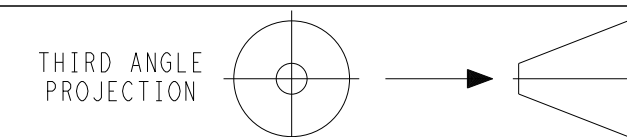
A	INITIAL RELEASE.	22 NOV 2022	LT-NS	TM		ECN1161724	<p>THIRD ANGLE PROJECTION</p>	<p>IMPERIAL INCH FORMAT: UNLESS OTHERWISE SPECIFIED DIMENSIONS ARE IN INCHES WITH METRIC CONVERSIONS IN [MILLIMETERS]</p>	<p>TITLE</p> <p>INSTALLATION INSTRUCTION 22" DIA FUEL TANKS, 30 &amp; 50 GALLONS</p>	<p>DRAWING NO.</p> <p>98-02750</p> <p>SHEET 2 OF</p>	REV
SYM	REVISION RECORD	DATE	BY	ENGR.	M.E.	NPCA NO.					A



TYPICAL TANK ARRANGEMENT



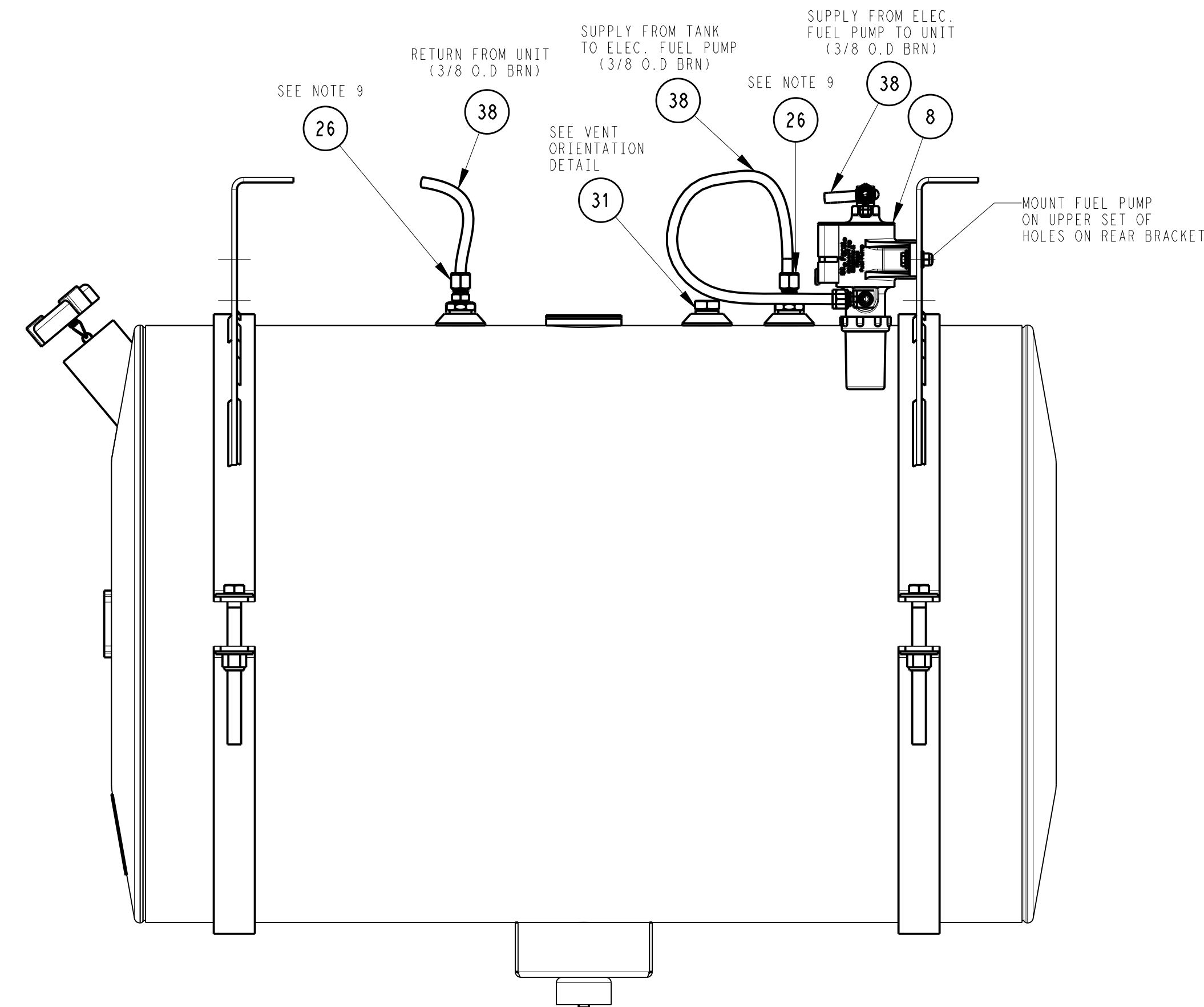
C	PICT'L UPDATED TO SHOW NEW PUMP LOCATION	30 MAR 2023	NS	TM		ECN1166880
A	INITIAL RELEASE.	22 NOV 2022	LT-NS	TM		ECN1161724
SYM	REVISION RECORD	DATE	BY	ENGR.	M.E.	NPCA NO.



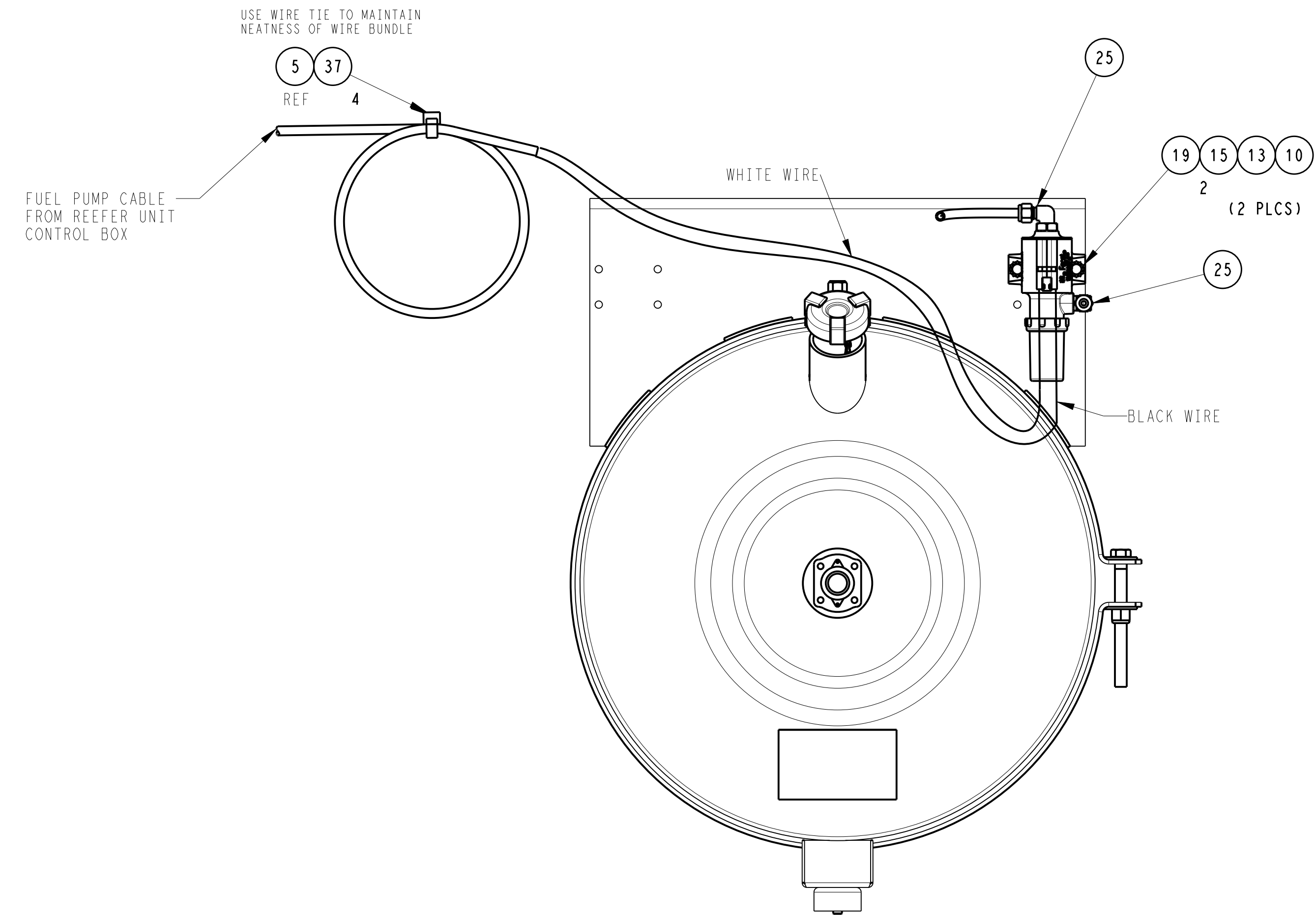
IMPERIAL INCH FORMAT:  
UNLESS OTHERWISE SPECIFIED  
DIMENSIONS ARE IN INCHES WITH  
METRIC CONVERSIONS IN (MILLIMETERS)

TITLE  
INSTALLATION INSTRUCTION  
22" DIA FUEL TANKS, 30 & 50 GALLONS

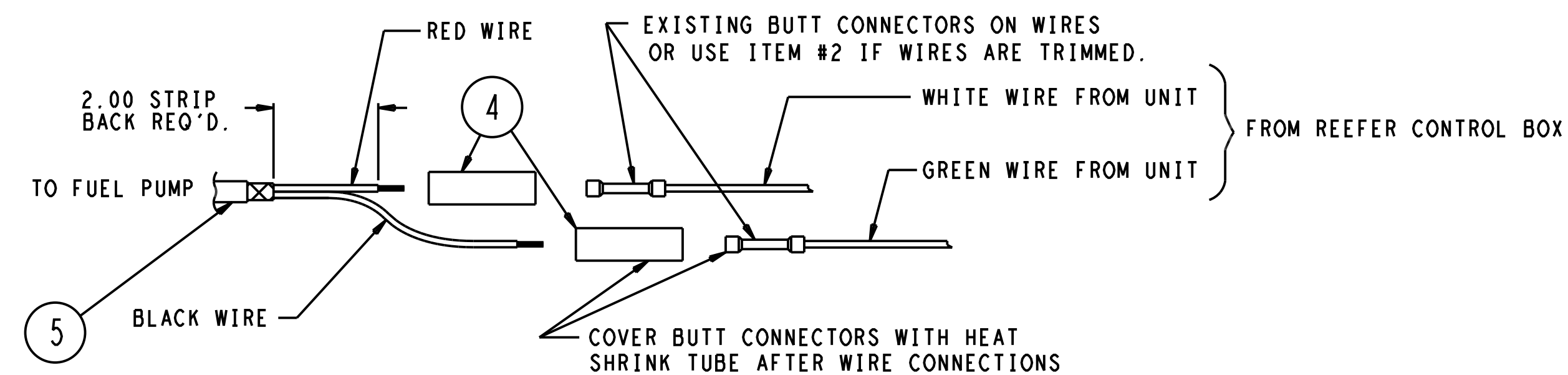
DRAWING NO. 98-02750  
SHEET 3 OF 3  
REV C



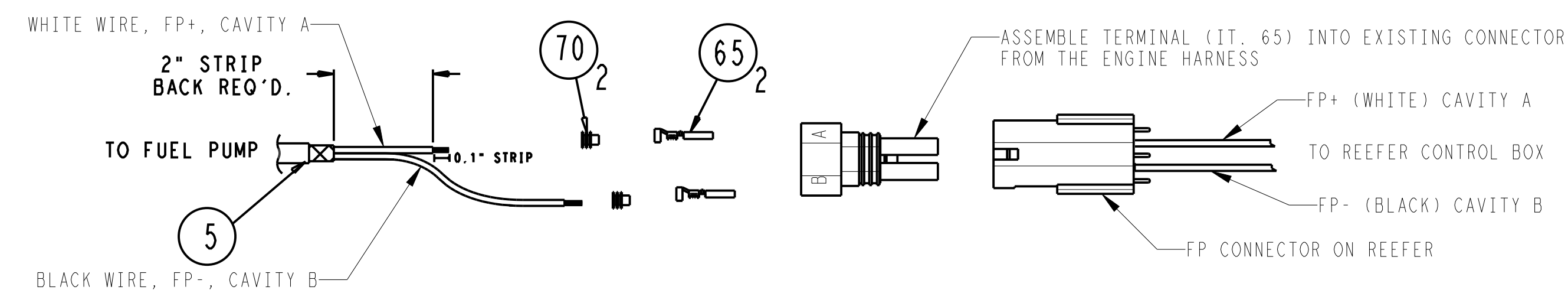
FOR KITS WITH ELECTRIC FUEL PUMP



COMPONENTS HIDDEN FOR CLARITY

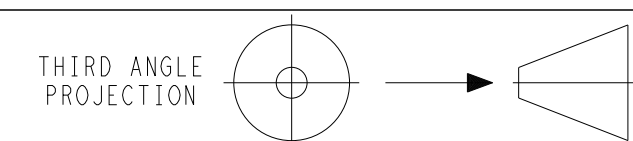


FOR UNITS WITH ELECTRIC FUEL PUMP LOOSE WIRES AT REEFER UNIT CONTROL BOX



FOR UNITS WITH ELECTRIC FUEL PUMP CONNECTOR AT REEFER UNIT CONTROL BOX

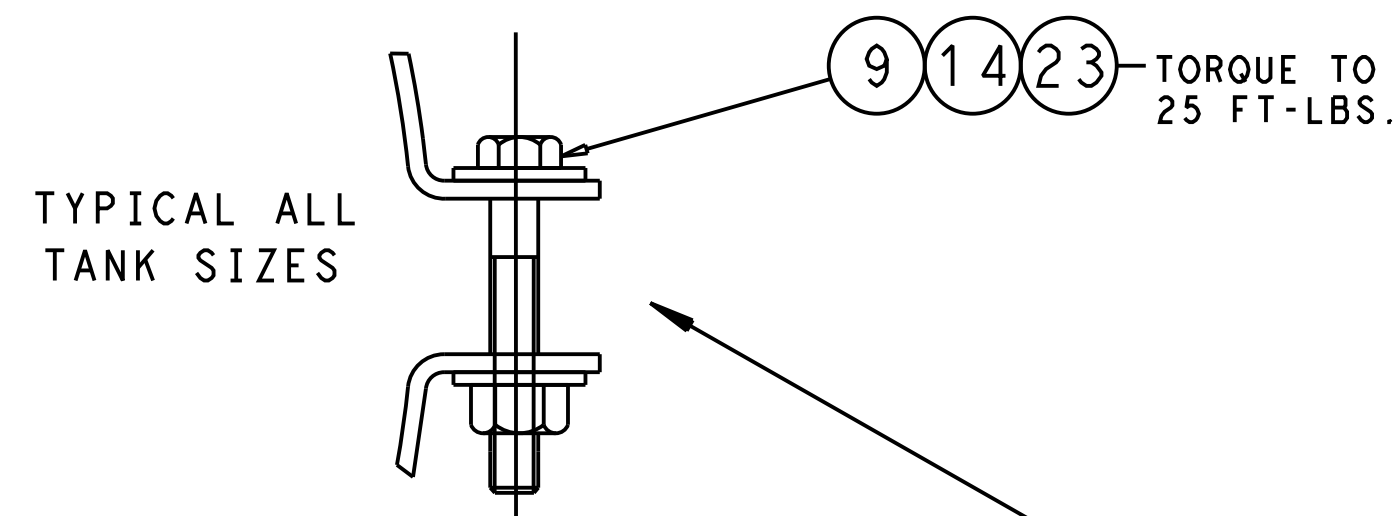
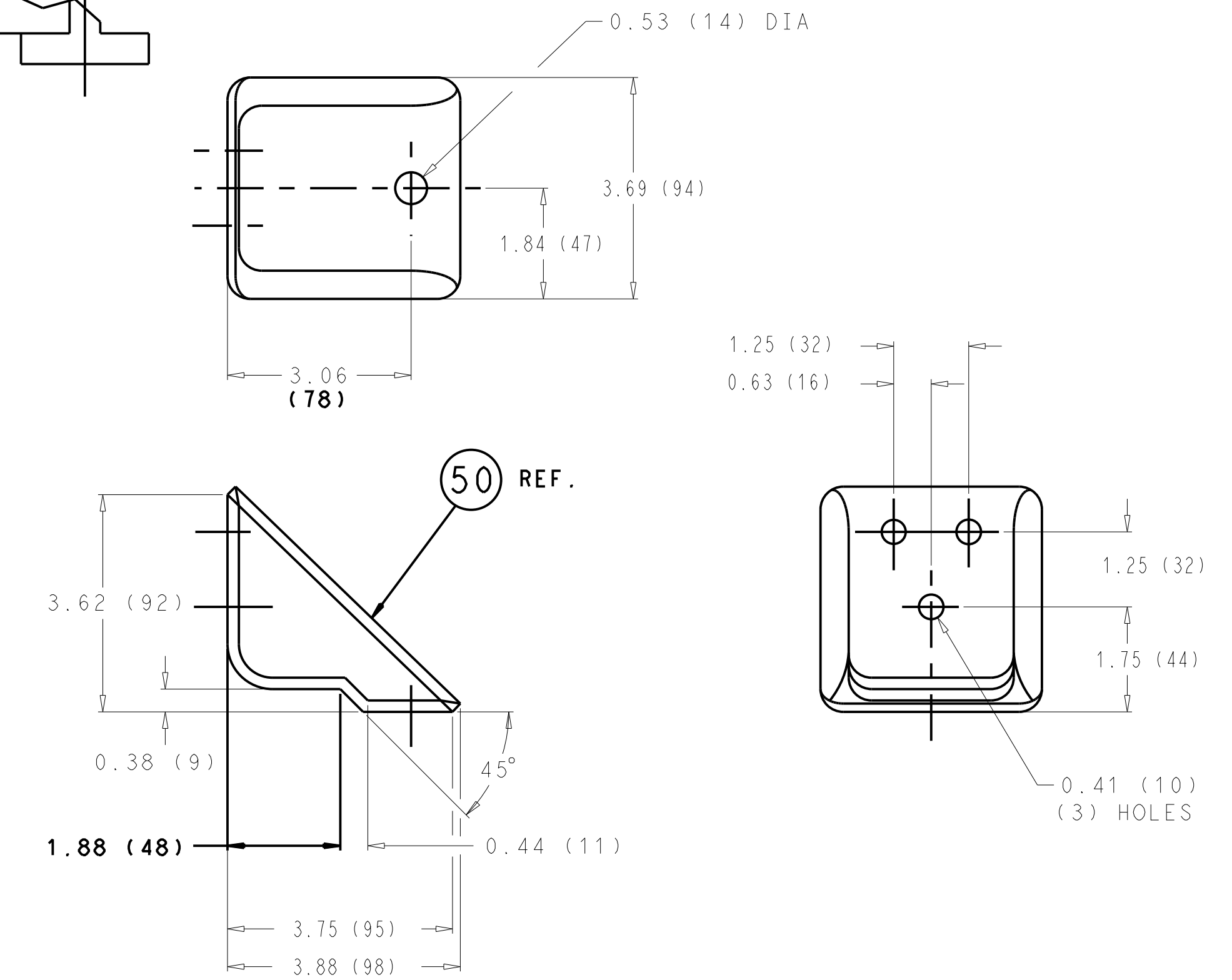
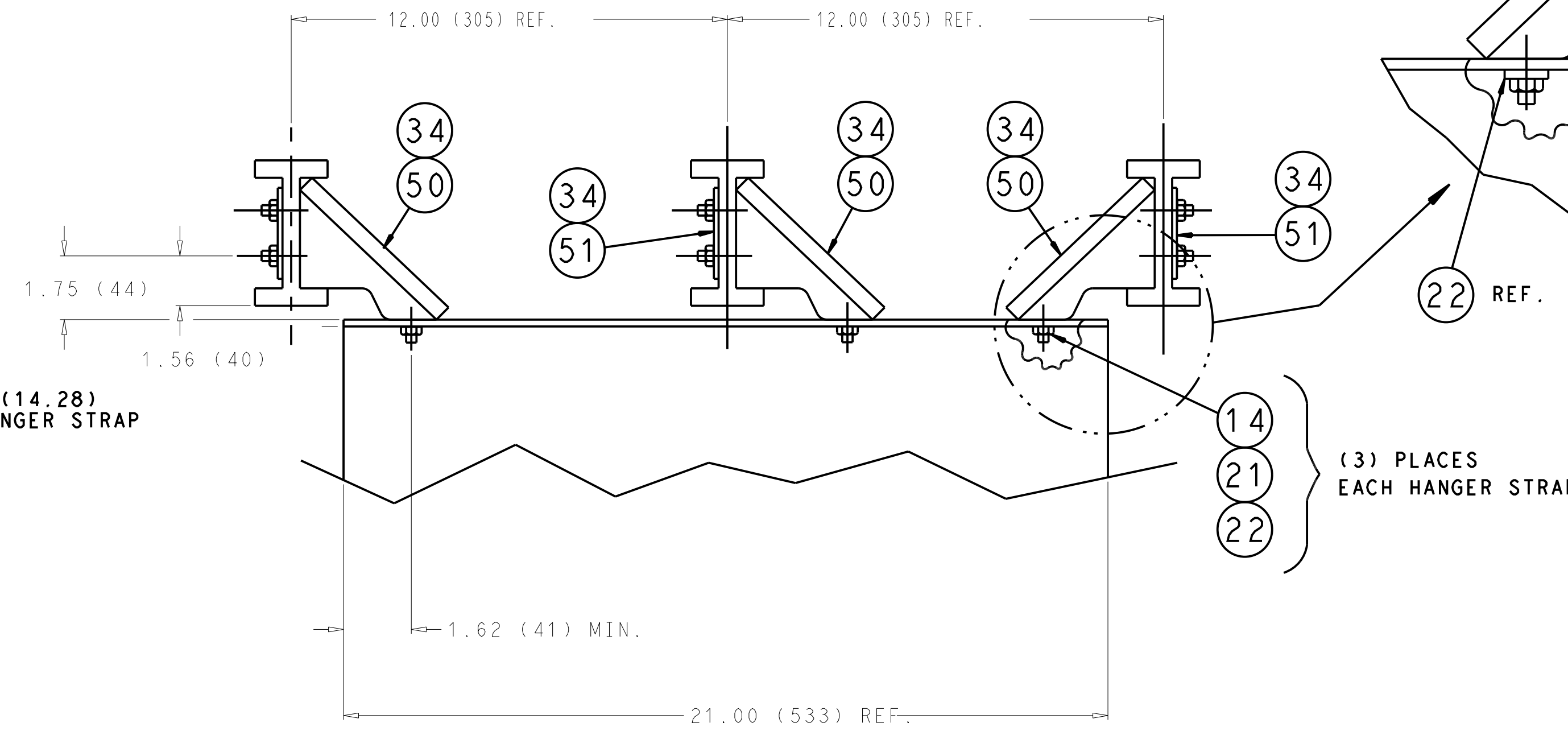
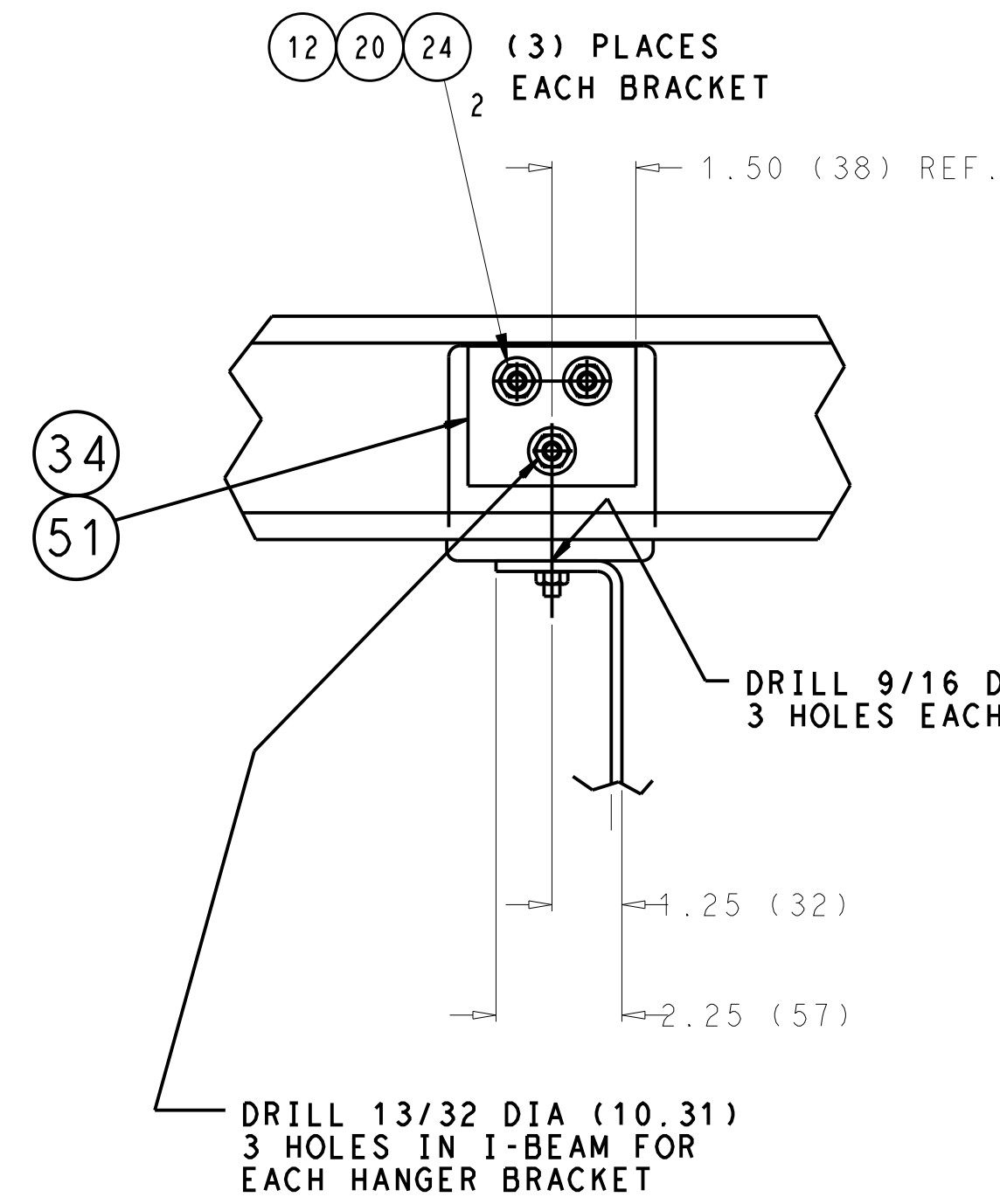
C	REDRAWN, RELOCATED PUMP TO REAR BRACKET, ADDED LOCATION DETAILS	30 MAR 2023	NS	TM		ECN1166880
A	INITIAL RELEASE.	22 NOV 2022	LT-NS	TM		ECN1161724
SYM	REVISION RECORD	DATE	BY	ENGR.	M.E.	NPCA NO.



IMPERIAL INCH FORMAT:  
UNLESS OTHERWISE SPECIFIED  
DIMENSIONS ARE IN INCHES WITH  
METRIC CONVERSIONS IN (MILLIMETERS)

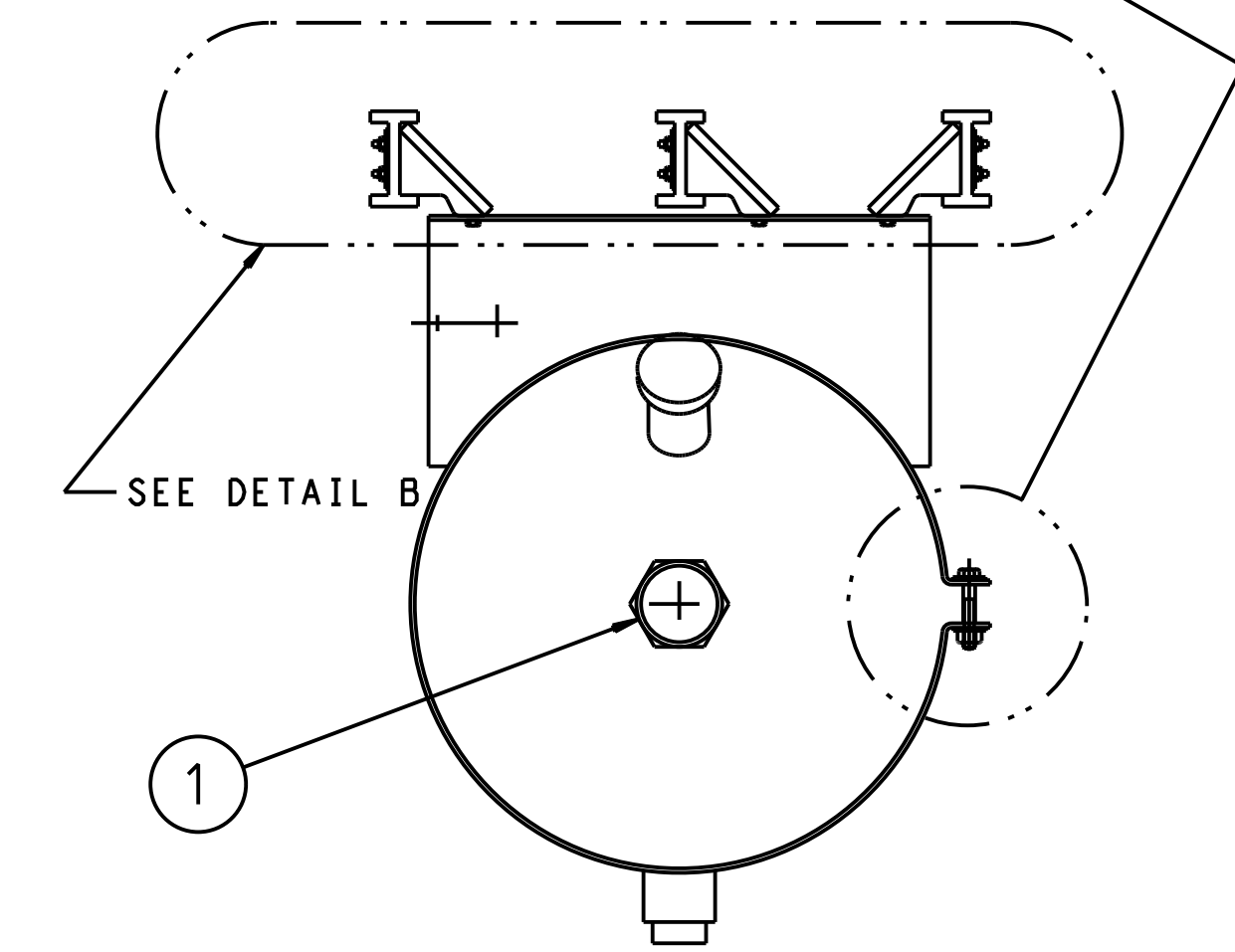
TITLE  
INSTALLATION INSTRUCTION  
22" DIA FUEL TANKS, 30 & 50 GALLONS

DRAWING NO.	98-02750	REV	C
	SHEET 4 OF		

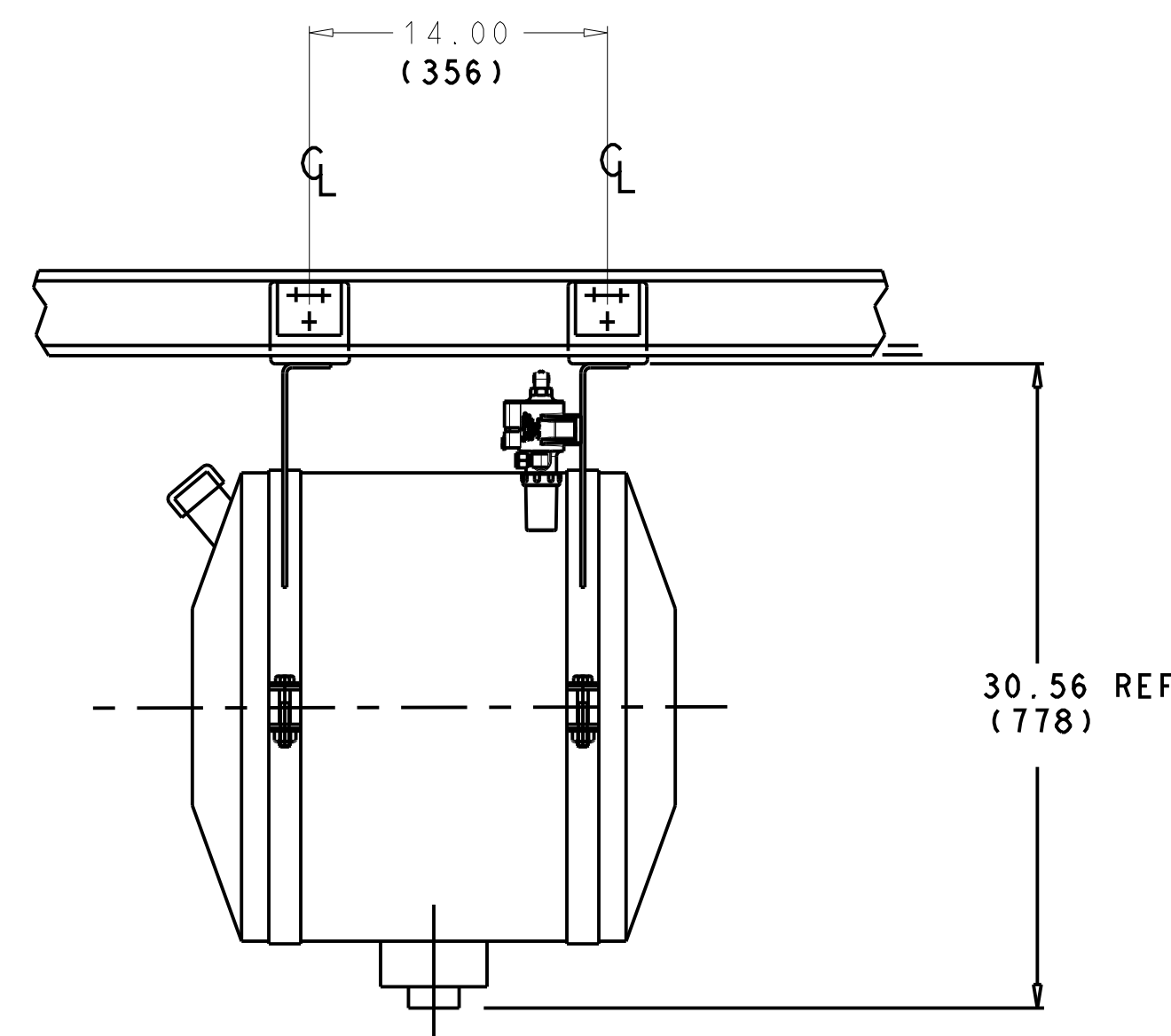


DETAIL B

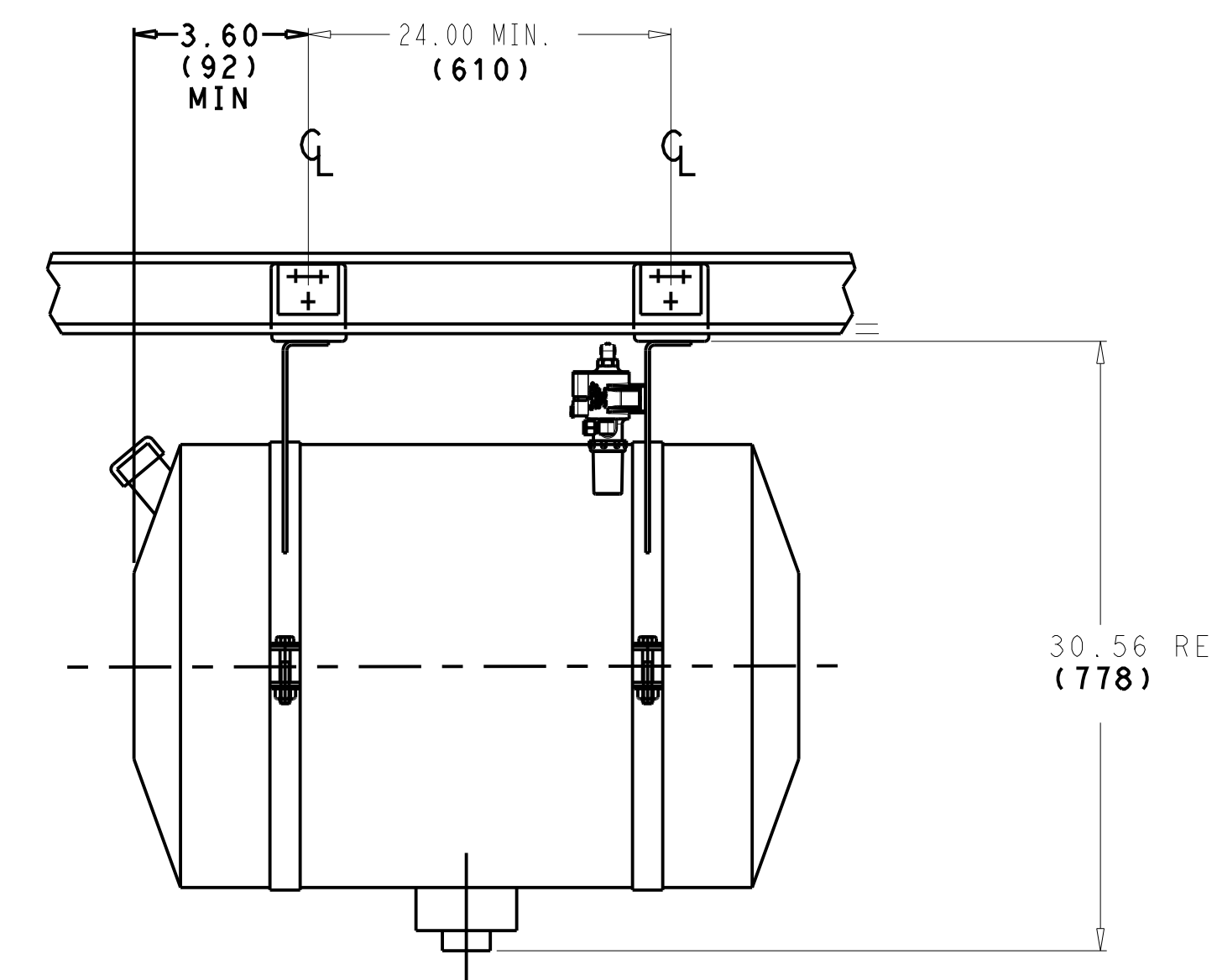
HANGER BRACKET DETAIL



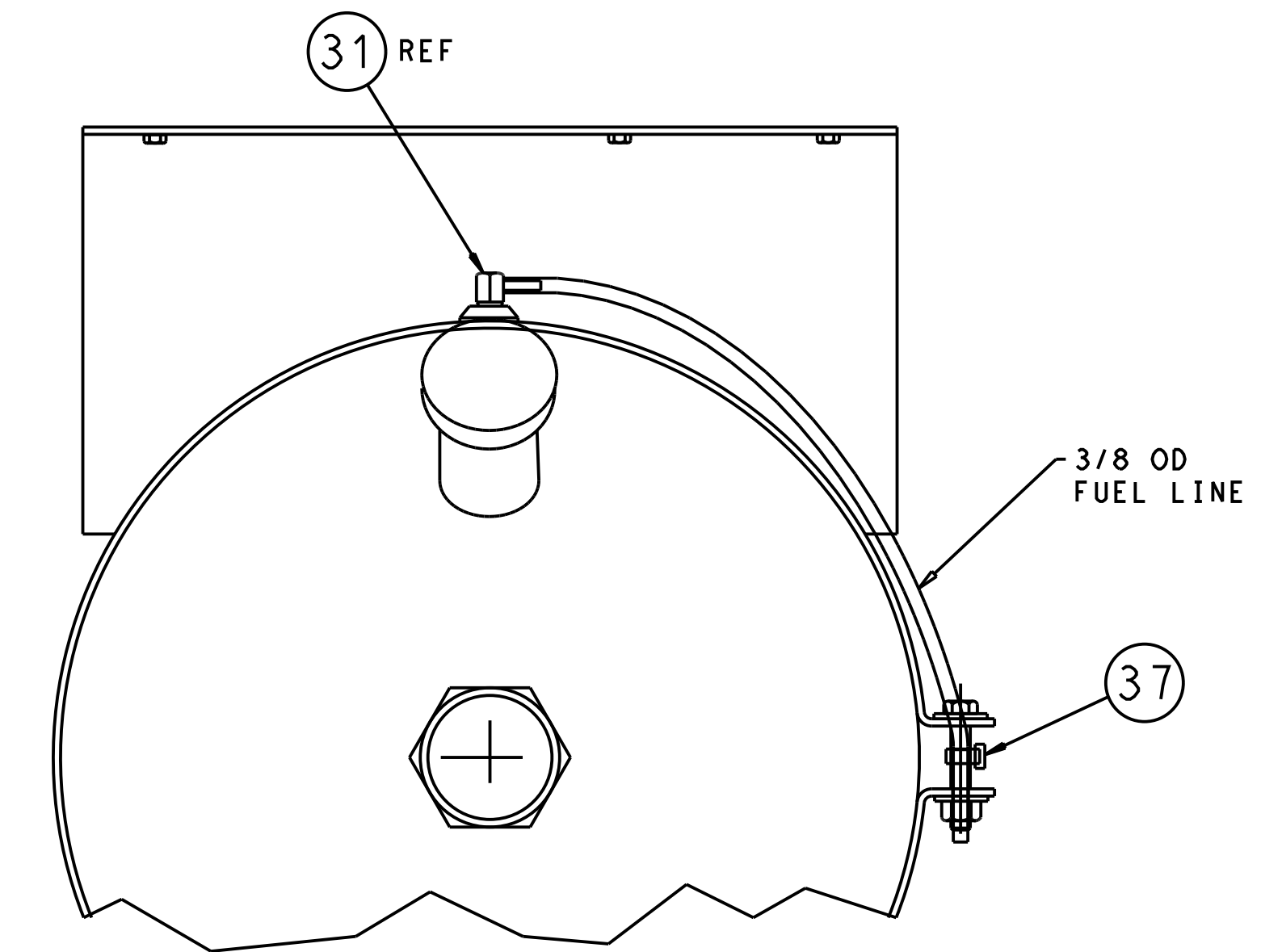
TYPICAL



30 GALLON TANK



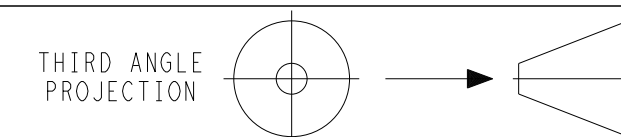
50 GALLON TANK



REAR OF TRAILER →  
VENT ORIENTATION DETAIL

ORIENTATE FUEL TANK VENT BARBED FITTING TO FACE TOWARDS REAR TRAILER DOOR.  
CUT 18.00 INCHES OFF 3/8 FUEL LINE AND INSTALL ONTO VENT THEN ROUTE TO TANK STRAP BOLT AND SECURE TO BOLT WITH WIRE TIE.

SYM	REVISION RECORD	DATE	BY	ENGR.	M.E.	NPCA NO.
C	PICT'L UPDATED TO SHOW NEW PUMP LOCATION	30 MAR 2023	NS	TM		ECN1166880
A	INITIAL RELEASE.	22 NOV 2022	LT-NS	TM		ECN1161724



IMPERIAL INCH FORMAT:  
UNLESS OTHERWISE SPECIFIED  
DIMENSIONS ARE IN INCHES WITH  
METRIC CONVERSIONS IN (MILLIMETERS)

TITLE  
INSTALLATION INSTRUCTION  
22" DIA FUEL TANKS, 30 & 50 GALLONS

DRAWING NO. 98-02750  
SHEET 5 OF 5  
REV C