



Electric Auxiliary Power Units
with advanced lithium-ion technology

Quiet, Emission-Free Cooling

Maximum Runtime, Battery Life and ROI



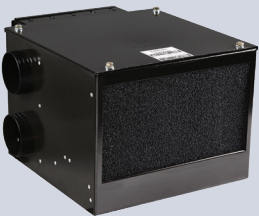
Electric Auxiliary Power Units with advanced lithium-ion technology



APU Power Plant
Dimensions:
21.5" x 25.2" x 28.1"
(638 x 640 x 714 mm)
Weight with batteries:
347lbs



Lithium-ion Battery
(two required):
Dimensions (each):
27" x 7" x 9"
(686 x 178 x 229 mm)
Weight: 70 lbs
Certified compliant with
U.S. DOT, 49 CFR Part
173.185(a)



Under Bunk Climate Control Unit
Dimensions:
15" x 9.6" x 12.5"
(381 x 244 x 318 mm)
Weight: 30 lbs

Programmable User Control Panel

Lockable digital control for air conditioning, heating and fan.



Advanced Li-ion Technology: The ComfortPro[®] electric auxiliary power unit (APU) with li-ion batteries (250ION) significantly outperforms conventional electric APU runtime and battery life, providing quiet, emissions-free performance with minimal maintenance.

Less, Yet More: Using proprietary power-management technology, two li-ion batteries do more than the work of four AGM batteries, achieving 17 hours of continuous air conditioning under certain real-world conditions, the longest of any electric APU. That's double the runtime of some competitive models and 50% more runtime than our AGM-battery model, while trimming APU weight by 26%.

Purpose-built Batteries: Advanced li-ion batteries are engineered specifically for APU applications. An extremely power-dense and durable solution, they charge faster and experience less power degradation over time compared to conventional batteries. Warrantied for worry-free performance for five years, outlasting some fleet trade cycles.

Fuel Savings: Fuel savings and compliance with anti-idling regulations are immediate as soon as the truck engine is shut off and the ComfortPro electric APU is turned on.

Low Maintenance System: With few moving parts compared to diesel APUs, ComfortPro electric APUs minimize maintenance expenses.

Faster ROI: Compared to a diesel APU, the li-ion ComfortPro electric APU has a lower total cost of ownership resulting in faster ROI.*

Standard 250ION Features Include:

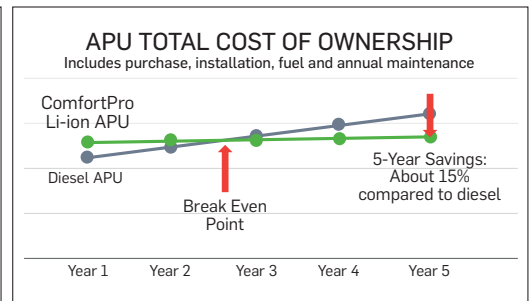
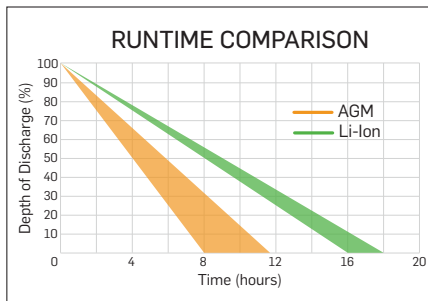
APU Power Plant
Two 12.8 V li-ion batteries
with 5-year warranty
Fully sealed electric compressor

Under Bunk Climate Control Unit
Air Conditioning, 7,500 BTU/hr
Airflow, 240 CFM
Refrigerant R-134a

Control Panel
Programmable heat and cool
Energy-saving Comfort Monitor mode
APU battery charge monitor
Configurable Cabin Pre-Cool Lock to extend battery life

Accessories and Options:

Fuel-fired air heater 7,000 BTU/hr – keeps cab warm in colder ambients
Fuel-fired coolant heater 17,200 BTU/hr warms cab and adds tractor pre-heating
Inverter for 120 VAC hotel loads
Shore power adapter – enables the APU to be plugged into 110/120 VAC household power for operation and battery charging



* Based on a ComfortPro electric APU equipped with a fuel-fired heater option compared to a leading diesel APU over 5 years

Specifications are subject to change without notice.
Warranty: Product warranty and limitations are outlined in Form 62-12074.
This warranty is applicable only in North America. Consult your Carrier Transicold representative for warranty coverage elsewhere. Form 62-12182.

North America
Carrier Transicold
700 Olympic Drive
Athens, GA 30601 USA

Central America and Mexico
Carrier Transicold
Ejercito Nacional, 253-A Piso 5
Colonia Anahuac
11320 Mexico D.F.