



Electric Auxiliary Power Units

Emission-Free Comfort

High Performance
Cab Climate Control



Electric Auxiliary Power Units

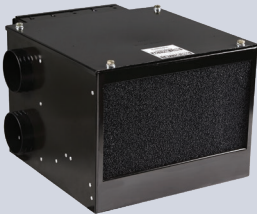


APU Power Plant

Dimensions:
21.5" x 25.2" x 28.1"
(638 x 640 x 714 mm)
Weight: 470 lbs

Under Bunk Climate Control Unit

Dimensions:
15" x 9.6" x 12.5"
(381 x 244 x 318 mm)
Weight: 30 lbs



Programmable User Control Panel

Lockable digital control for air conditioning, heating and fan.

ComfortPro[®] electric auxiliary power units (APUs) (240EPS) provide quiet, emissions-free truck cab cooling while delivering up to 11 hours* of run time, making it one of the longest run-times in an electric APU.

Simpler Design: Fewer moving parts – no oil changes, no belts to tighten or valves to adjust provides additional freedom when it comes to maintenance.

Variable-speed, fully sealed hermetic electric compressor combined with exceptionally efficient power management technology that assures maximum runtimes for the battery type used.

Cabin Pre-Cool Lock that helps extend battery runtime by assuring the preferred cabin temperature is attained before the APU takes over.

Independent power plant that does not tap into and reduce the life of the tractor battery, which could potentially lead to a tractor no-start situation.

Standard Features Include:

APU Power Plant (240EPS)

Four group 31 AGM batteries
(total 400Ah)
Fully sealed hermetic electric compressor

Under Bunk Climate Control Unit

Air Conditioning, 7,500 BTU/hr
Airflow, 240 CFM
Refrigerant R-134a

Control Panel Configurable Features

Energy-saving Cabin Pre-cool Lock Engine pre-heating (if equipped with optional heater)
APU battery charge monitor
Diagnostics with time stamped and stored fault codes
Downloadable data logs

Accessories and Options:

Fuel-fired air heater 7,000 BTU/hr – keeps cab warm in colder ambients
Fuel-fired coolant heater 17,200 BTU/hr – adds engine pre-heat capability and warms cab
Inverter for 120 VAC hotel loads
Shore power adapter - enables the APU to switch over to 110/120-volt household power for operation and battery charging

* Variable based on ambient temperatures, average power consumption, solar load and cab insulation.

Specifications are subject to change without notice.

Warranty: Product warranty and limitations are outlined in Form 62-12074.

This warranty is applicable only in North America. Consult your Carrier Transicold representative for warranty coverage elsewhere. Form 62-12089 Rev. C.

North America
Carrier Transicold
700 Olympic Drive
Athens, GA 30601 USA

Central America and Mexico
Carrier Transicold
Ejercito Nacional, 253-A Piso 5
Colonia Anahuac
11320 Mexico D.F.

©2022 Carrier. All Rights Reserved. Printed in USA 6/22.
Carrier, Carrier Transicold and ComfortPro are registered trademarks of Carrier Corporation.



www.trucktrailer.carrier.com